

Modulus™ Microplate Text to Column Format Change

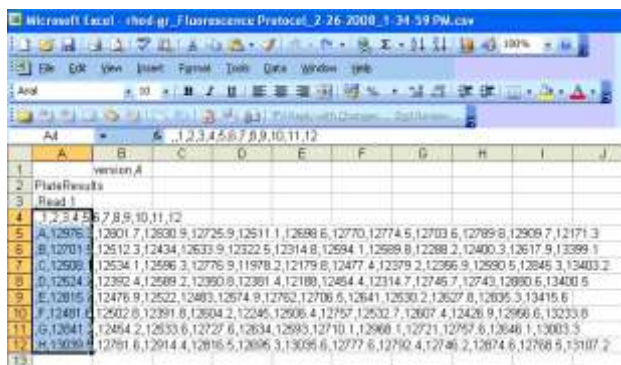


This Technical Note provides instruction for using the Convert Text to Columns Wizard. The Wizard is an easy way to separate simple cell content, separated by commas, into independent cells for each well reading on data generated from the Modulus™ Microplate Multimode Reader.

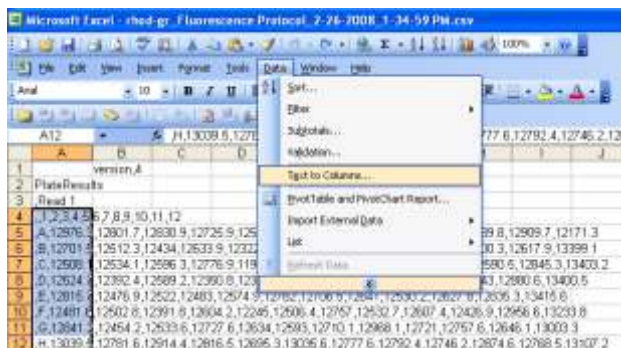
Data generated using the Modulus™ Microplate is exported in a common format known as comma separated value (.csv). Depending on Regional settings, data generated using the Modulus™ Microplate when presented in Excel may be in one cell separated by commas. Using the Convert Text to Columns Wizard is an easy way to separate simple cell content, separated by commas, into independent cells for each well reading.

The following instructions are a simple exercise showing the method to convert comma separated data into a format that is ideally suited for data plotting and analysis applications.

Step 1. Highlight column that contains data

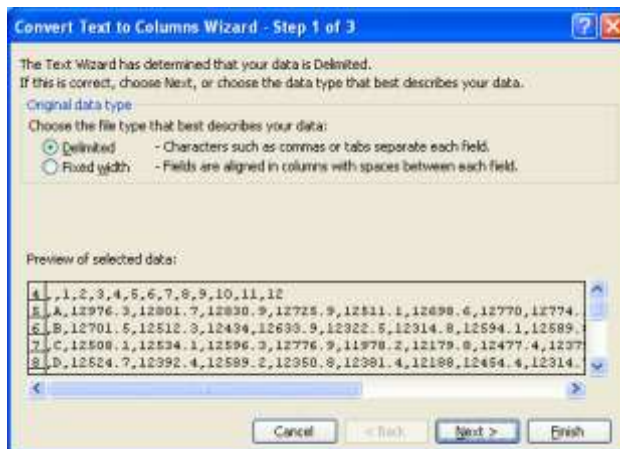


Step 2. Under **Data** tab, select the **Text to Columns** option.



Modulus™ Microplate Text to Column Format Change

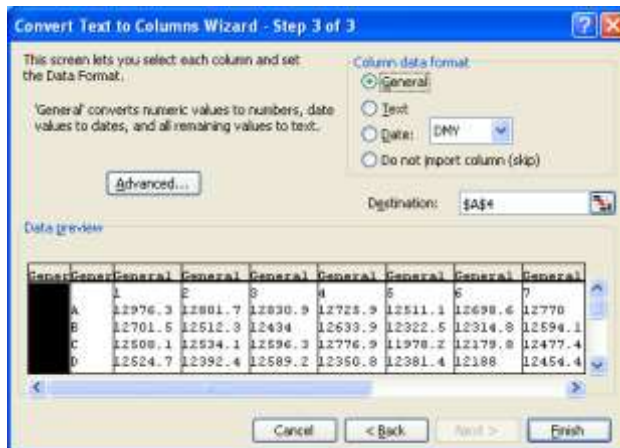
Step 3. Select the **Delimited** button and then click on the **NEXT** button.



Step 4. Check the **Comma** box and then click on the **NEXT** button.



Step 5. Select the **GENERAL** button and then click the **FINISH** button.



Modulus™ Microplate Text to Column Format Change

The Excel spreadsheet has now been converted from simple cell content, separated by commas, into independent cells for each well reading. The data generated using the Modulus™ Microplate is now in a format that is ready for data plotting and analysis applications.

	A	B	C	D	E	F	G	H	I	J	K	L	M	N
1	version 4													
2	Plate Results													
3	Read 1													
4		1	2	3	4	5	6	7	8	9	10	11	12	
5	A	12978.3	12801.7	12830.9	12725.9	12811.1	12686.8	12793	12774.5	12703.6	12788.8	12889.7	12771.3	
6	B	12701.5	12512.3	12434	12633.8	12302.6	12374.8	12594.1	12588.8	12388.2	12400.3	12617.9	12399.1	
7	C	12508.1	12534.1	12596.3	12776.8	11978.2	12179.8	12477.4	12379.2	12366.8	12598.5	12845.3	13402.2	
8	D	12524.7	12982.4	12588.2	12590.8	12381.4	12188	12454.4	12314.7	12745.7	12743	12881.6	13402.2	
9	E	12816.7	12476.8	12523	12483	12574.9	12782	12706.5	12541	12630.2	12827.8	12835.3	13415.6	
10	F	12481.6	12582.8	12391.8	12884.2	12345	12586.4	12757	12502.7	12607.4	12426.9	12866.6	12239.8	
11	G	12641.2	12464.2	12533.6	12727.6	12634	12583	12710.1	12868.1	12721	12757.6	12846.1	13003.3	
12	H	13038.5	12781.6	12814.4	12816.5	12896.3	13026.6	12777.6	12792.4	12746.2	12874.6	12788.5	13102.2	
13														

TRADEMARKS

Modulus™ is a trademark of Turner BioSystems, Inc.

TURNER BIOSYSTEMS CONTACT INFORMATION

Phone: (408) 636-2400 or
 Toll Free: (888) 636-2401 (US & Canada)
 Fax: (408) 737-7919

Web Site: www.turnerbiosystems.com

E-Mail: techsupport@turnerbiosystems.com

Mailing Address:
 Turner BioSystems, Inc.
 645 N. Mary Avenue
 Sunnyvale, CA 94085 USA

